

# Child Development Learning Journey



## Final Exam

- What is the role of the birth partner?
- What methods of pain relief when in labour are there?
- What are the signs that labour has started?
- The three stages of labour
- The methods of assisted birth



- Recognise general signs and symptoms of illness in children
- How to meet the needs of an ill child
- How to ensure a child-friendly safe environment

Unit R057 Topic Area 2: Antenatal care and preparation for birth      Unit R057 Topic Area 3: Postnatal checks, postnatal care and the conditions for development      Unit R057 Topic Area 4: Childhood illnesses and a child safe environment      Unit R057: Revision

Unit R057 Topic Area 1: The signs and symptoms of pregnancy



- The purpose and importance of antenatal clinics
- Screening and diagnostic tests
- The purpose and importance of antenatal classes
- The choices available for delivery

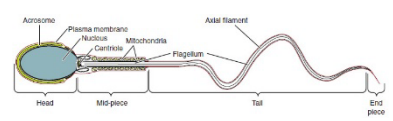
- The postnatal checks that are carried out on the baby immediately after birth and the reasons why
- The checks that are carried out on the baby within one to five days of birth and the reasons why
- Postnatal care of the mother and baby
- The developmental needs of children from birth to five years



Unit R057 Topic Area 1: How reproduction takes place

What are the common signs and symptoms of pregnancy?

- Ovulation
- Conception/fertilisation
- Development of the embryo and foetus:
- Multiple pregnancies – Identical/Non identical



Unit R057 Topic Area 1: The structure and function of the reproductive systems

What is the structure and function of the female reproductive system?

Methods of observation  
Methods of recording

How does play benefits development?

The stages of play  
The types of play

## Year 11

Unit R057 Topic Area 1: Pre-conception health and reproduction

- What factors affect pre-conception health for women and men?
- What types of contraception methods are there and what are their advantages and disadvantages?



Unit R059 Topic Area 4: Plan and evaluate play activities

Planning play activities for a chosen area of development  
How effective were the activities in meeting the PIES?

- Physical development
- Intellectual development
- Social development

Unit R059 Topic Area 2: Stages and types of play and how play benefits development

Unit R059 Topic Area 1: The expected development norms from one to five years

Unit R058 Topic Area 3: How to evaluate planning and preparation of a meal

Equipment  
Ingredients and quantities  
Safety and hygiene – personal and the environment

- Eatwell guide
- 5 a day
- British Nutritional Foundation recommendations

Unit R058 Topic Area 3: Plan for meal



What are the reasons why accidents happen in a childcare setting?

What factors affect the suitability and choice of equipment needed in a daycare?

## Year 10

Unit R058 Topic Area 1: Creating a safe environment in a childcare setting

What accidents could happen to children in a nursery setting?

How can you plan to prevent accidents in a childcare setting?

Unit R058 Topic Area 2: Choosing suitable equipment for a childcare setting

- What types of essential equipment is needed in a nursery?
- Travelling
  - Sleeping
  - Feeding
  - Changing
  - Indoor and outdoor playing

Unit R058 Topic Area 3: Current Government dietary recommendations for healthy eating for children from birth to five years

What essential nutrients does a child need and what is their function for children from birth to five years?

- What food sources meet the nutritional needs for:
- Birth to 6 months
  - The three stages of weaning between 6 – 12 months
  - 1 to 5 years